

KAS FACE RECOGNITION DOOR LOCK MANUAL

SAFETY AND PRECAUTIONS

- ① As a high technology product the installation of an electronic door lock will have an impact on its normal operation and life time. It is suggested to install the lock after completing the room decoration. It is recommended to have professional technicians to follow our instructions accordingly for installations.
- ② To ensure the high performance and service life time of electronic locks please do not use the locks under the conditions of intense radiation, high magnetic fields, high temperatures and high corrosion.
- ③ Please initialize the lock after installations. And set electronic keys in case of an unexpected unlocking by others.
- ④ Please check whether the key box has been opened when you get the lock.
- ⑤ Please take good care of the mechanical keys and the electronic keys which have been programmed.
- ⑥ The lock uses 1.5v alkaline batteries. The lock will be adversely affected by non-alkaline batteries or the mixed use of batteries with different conditions/brands.
- ⑦ Please read the operation manual carefully before using to better understand the functions and features of our products. If you have any doubts please call our customer service centers or headquarter service center. Our professional technicians will try utmost to solve your problems.
- ⑧ If you want to know about our company or the user manual is missing you can find more information by visiting our website where some useful files can be downloaded.

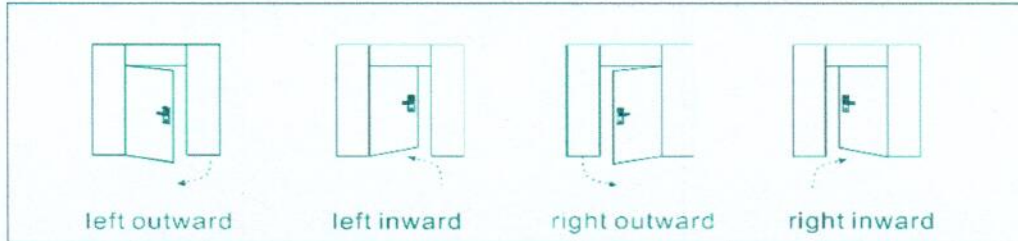
PRODUCT FEATURES

- ① Verification: Face, Card, PIN or combinations of them. If a person successfully verified, the door is unlocked. After 5 seconds the door is locked again.
- ② Supported verification modes are:
 - Face • Card • PIN • Face+Card
 - Face+PIN • Card+PIN • Face+Card+PIN
- ③ 100 face users can be used; 1 set of password can be used. It is included by 6-8 digital numbers; 100 card users can be used;
- ④ Reversible handle which can be done easily
- ⑤ The lock supports M1 cards. Other cards are not available.
- ⑥ 4pieces of AA batteries are need
- ⑦ With emergency power USB connection to charger

OPERATION INSTRUCTION

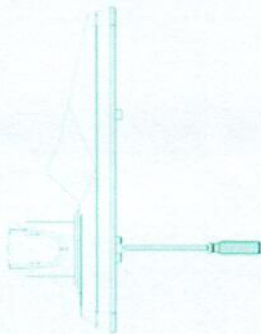
Door Opening Direction

Door opening direction of your door in accordance with the following diagram

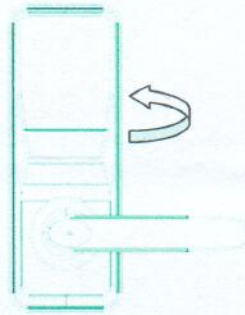


Adjusting smart locks

Adjust the opening direction



Using the screwdriver to loosen the screw on handle hole from the lock bottom.



Twist the loosen handle to 180 degree direction, and tighten the screws of the handle



The direction of shaft arrow on the lock bottom must be the same direction of the handle

Using Mechanical Key

Open the key cover on the handle



Insert Mechanical key

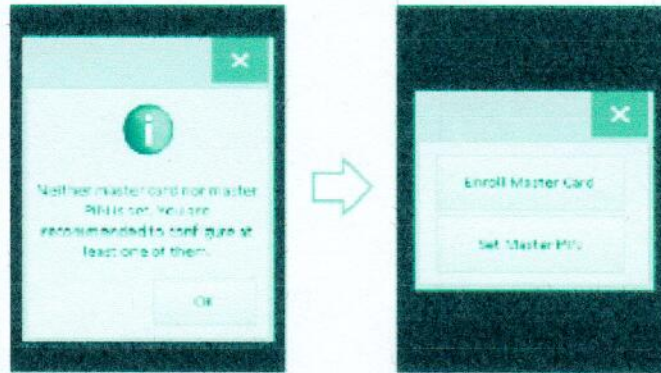
Rotation 90 degree



Configuring Lock

When you get an R601 lock, it is completely unprotected—anyone has full access to the lock. Before you actually use the lock, you should register yourself as a master to protect it from being accessed by people without your permission.

If the lock is unprotected, it will remind you to configure lock master on startup.



You can choose 'Enroll Master Card' or 'Set Master PIN'. Once Master Card or Master PIN is enrolled, it is required to manage the lock so you should keep the card or PIN and do not lose it.

Using the Lock

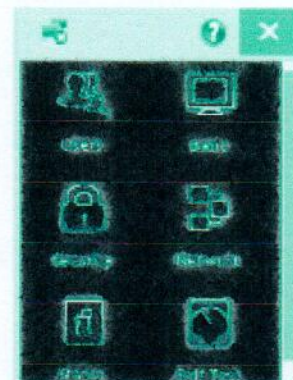
User Information Management

After the lock is configured, the next step is to enroll users. To do this, tap the Home button on the main screen. (This button is located at bottom-right corner of the screen.)



Master Verification Screen (Figure 2-6)

If the device is secured, it will ask for master verification as in Figure 2-6. You should verify yourself by swiping Master Card or entering Master PIN.



The main menu (Figure 2-7)

After successful master verification, the lock will show main menu (Figure 2-7).

Using the Lock

Manage Users



For registrations (Figure 2-8)

The user should select the item "Users" and the lock will show manage users screen (Figure 2-8).



User Details (Figure 2-9)

To enroll a new user, the user should tap "New". The lock will now show user details screen (Figure 2-9).

1. As the screen displays, users can enroll Face, Card, PIN or any combinations among them. User's name is to be set as required.
2. To modify or remove existing user, the user can select "Edit..." from "Manage Users" screen, for changing name, enrolling and removing Face/Card/PIN.

Verification

Verification is done on the main screen. For PIN verification, the user should select the PIN-Input button (located at bottom-left corner on the main screen) and enter PIN.

R601 locks support following verification modes.

Mode	Description
Face/Card/PIN	Any verified face, card, or PIN is required to open a door.
Face	Face verification is required to open a door.
Card	Card verification is required to open a door.
PIN	PIN verification is required to open a door.
Card+Face	First swipe a card, and then your face is checked.
PIN+Face	First enter a PIN, and then your face is checked.
Card+PIN	Card and PIN are required to open a door. (The verification process is in random order)
Card+PIN+Face	First swipe a card and enter PIN (the order of those two verifications can be reversed), and then your face is checked.

If you want to change verification mode, refer to the next section.



Welcome Screen (Figure 2-10)

After successful verification, you will be greeted as shown in Figure 2-10 and door will be unlocked. After 5 seconds, the door will be locked again and device will shut down.

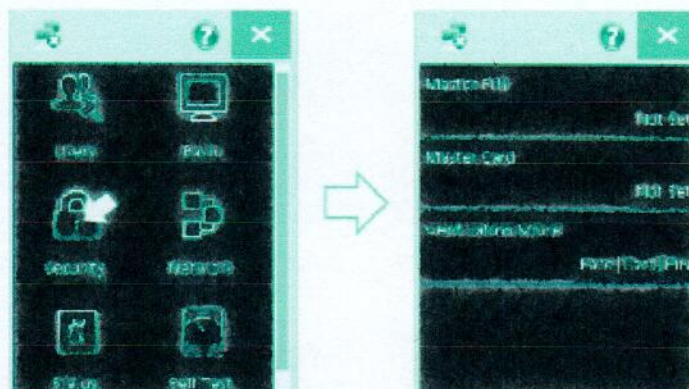


Unauthorized (Figure 2-11)

If verification is failed to be authorized within 20 seconds, the device will show "Unauthorized" and shut down in 5 seconds.

Security Configuration

If you would like to manage Master Card and/or Master PIN, or change verification mode, you can set it in "Security" menu. The "Security" menu can be entered from main menu by tapping "Security".

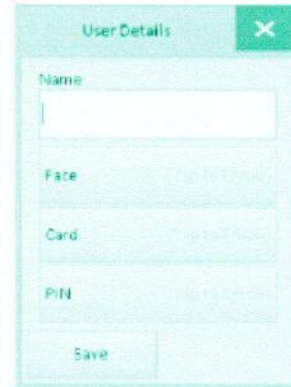


Manage Users



For registrations (Figure 2-8)

The user should select the item "Users" and the lock will show manage users screen (Figure 2-8).



User Details (Figure 2-9)

To enroll a new user, the user should tap "New". The lock will now show user details screen (Figure 2-9).

1. As the screen displays, users can enroll Face, Card, PIN or any combinations among them. User's name is to be set as required.
2. To modify or remove existing user, the user can select "Edit..." from "Manage Users" screen, for changing name, enrolling and removing Face/Card/PIN.

Verification

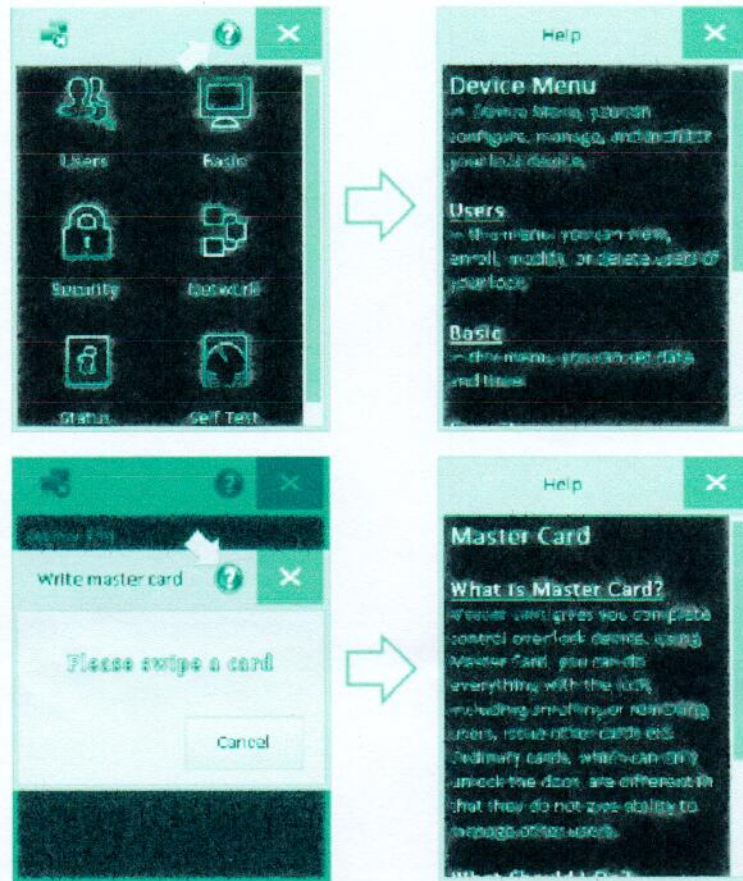
Verification is done on the main screen. For PIN verification, the user should select the PIN-Input button (located at bottom-left corner on the main screen) and enter PIN.

R601 locks support following verification modes.

Mode	Description
Face/Card/PIN	Any verified face, card, or PIN is required to open a door.
Face	Face verification is required to open a door.
Card	Card verification is required to open a door.
PIN	PIN verification is required to open a door.
Card+Face	First swipe a card, and then your face is checked.
PIN+Face	First enter a PIN, and then your face is checked.
Card+PIN	Card and PIN are required to open a door. (The verification process is in random order)
Card+PIN+Face	First swipe a card and enter PIN (the order of those two verifications can be reversed), and then your face is checked.

Quick Help

The R601 face door lock features Quick Help, which shows various instructions and guides. Users can get more information from “Help”.



Quick Help (Figure 2-12)

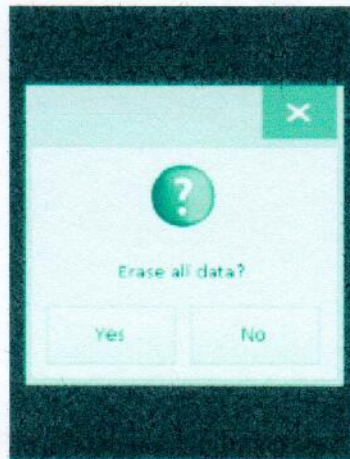
Master Recovery

If master privilege is lost (e.g. master card was damaged or lost), you cannot control the lock (you will still be able to open door if enrolled, but for enrolling new users, deleting or re-configuring lock are not viable). In this case, you can recover the privilege by performing following steps.

1. Unlock the door (using mechanical key if needed) and take out batteries. Disconnect external power source if any.
2. Wait for 24 hours.
3. After 24 hours, put batteries or connect external power.
4. Open the battery box and press " reset " button as shown in the picture.



While holding the bolts for unlocking the door, you will be noticed whether to reset its internal data.



If choose "Yes," the unlocking device will erase all existing data and revert to its initial state. You can go through initial configuration steps as the first time.