



**LMS – Quick Reference
Platinum Programming Guide**
Used in conjunction with the LMS-Platinum software

UPPER MANAGEMENT ONLY

Copyrights

Information in this document is subject to change without further notice. No part of this document may be reproduced or transmitted in any form or by any means, electronic or mechanical, for any purpose, without the expressed written permission of KAS.

This document provides step-by-step instructions for using the mobile programmer and setting the room numbers on our locks. The following icons are used throughout the document: *(see next page for details)*

Lock User Guide

Icons



Provides operator with information required to complete actions.



Provides additional information to the operator.



Use mouse (*single left click*) to complete instructions.



Stop / Warning – Informs operator of critical information / results from actions.

1

Numbered steps – used to indicate the order of input required.

You will be supplied with the following equipment:

Mobile Programmer



FOR SECURITY PURPOSES THIS DEVICE MUST ALWAYS BE KEPT SECURELY AWAY FROM ALL GUESTS AND GENERAL STAFF. OPERATING THIS DEVICE MUST BE UNDER THE COMPLETE CONTROL OF YOUR SYSTEM ADMINISTRATOR OR MANAGEMENT.

Mobile Programmer features:

- Used for programming all locks and access control modules
- Updating the clock in locks and access modules
- Confirms programming status and serial coding (*assists technical analysis*)
- Audit trail – review the last 512 entries per door and device
- Battery depletion status
- Error Diagnosis
- Re-program modifying capability



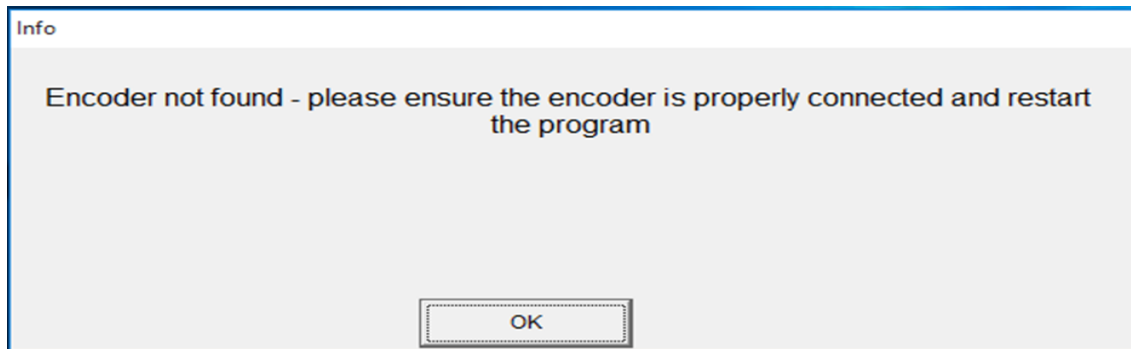
Lock User Guide

Collecting Data

Connect the **MOBILE PROGRAMMER** using the USB Cable. A yellow signal will appear on the mobile programmer display if the connection is successful.



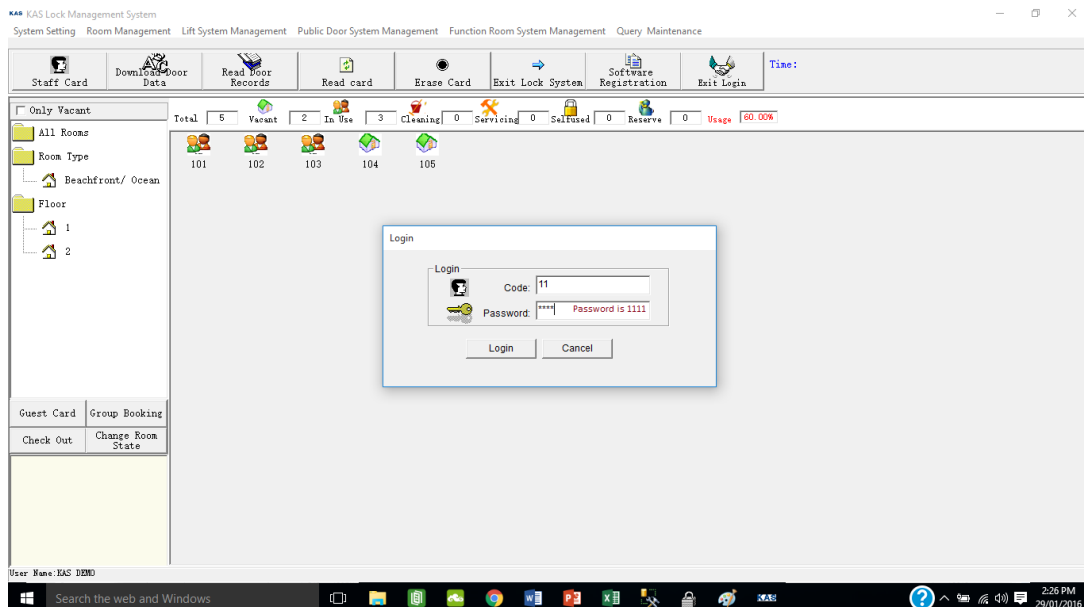
Click on the KAS icon from your desktop



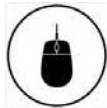
This message will display as during normal operation, the encoder is required on start up. For this installation, the encoder is not required so ensure that the **MOBILE PROGRAMMER** is plugged in.



Click on the **OK** button to proceed.



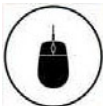
- 1 Enter the user code (01)
- 2 Enter the password (0101)



Click on **'Download Door Data'**



Ensure that **'2Sector'** and **'2-English'** have been selected



Select **'Download Door Data'**



Data from your PC is downloaded to the **MOBILE PROGRAMMER**. Once downloading is complete, the Download data success window appears



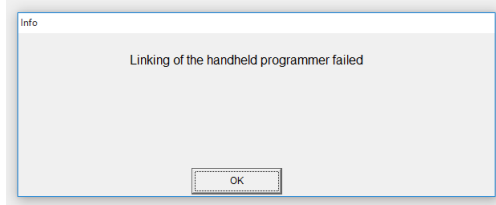
Click on **OK**



The **MOBILE PROGRAMMER** can now be used to download data to the locks.



If the following error occurs, Check the cable connection and exit out of the KAS System, plug in the **MOBILE PROGRAMMER** and start the process again from the beginning.



Programming Locks

- 1 Press number **3**. Screen will display: **DOWNLOAD**
- 2 Press **RUN**.
- 3 Enter room number associated to the door, eg, 101
Ensure you have your programming reference sheet. Please contact KAS if you are unsure of the programming references.
- 4 Press **RUN**. Close to the induction area
Downloading 01~06
- 5 Direct the programmer to the induction area. Beeps will sound every time the number changes on the programmer.



Induction Area: The mobile programmer should be directed toward the door lock induction area, ensuring the communication between devices is successful.

INDUCTION AREA

- 6 Screen will display:
ENSURE BY ROTATING THE PRIVACY LATCH (*may display "DEADBOLT"*)
Door Lock: Turn **privacy latch** on the back of the handle 90 degrees and back to its original position.
ACR: Press programming button in *ACM* (*only required for first initial programming*)




If successful the screen will display: **Download complete.**
If unsuccessful: Red flashing light will turn red and a harsh noise will sound – Please try again or see trouble shooting notes below.

- 7 Press **RUN**

Common Programming Warning Indications

Mobile Programmer has timed out	Indicates actions were not completed in designated time. Please retry steps.
Red flashing light will turn red and harsh noise will sound	<p>Programming failed.</p> <ul style="list-style-type: none"> • Retry steps • Confirm room number associated to the lock in the software • If you continue to receive this indication, please contact KAS • ACR ONLY - Check dim switches are in the correct order – refer to ACR Wiring specifications
Mobile programmer will not program	<ul style="list-style-type: none"> • Check batteries in both the lock and the mobile programmer • ACR ONLY - Check dim switches are in the correct order – refer to ACR Wiring specifications
Mobile programmer does not count to the number 6	<ul style="list-style-type: none"> • This occurs when the programmer is locked to an area. To remove the lock, programming is required several times. Retry programming steps approx. 6-10 times • Contact KAS if issue continues

Common Hardware Warning Indications

Constant BLUE Light	Confirmed open indication. Indicates this card has approved access. Open the door while the Blue light is on.
Constant RED Light	Indicates a non-approved access card (<i>therefore access will be denied</i>).
BLUE Light Followed By 5 Flashing RED Lights	Indicates that an approved card is used but denied access while the Privacy Latch is engaged (<i>generally used by a Cleaner/Maintenance card and would be denied access</i>).
An Alternating RED BLUE (Repeating) Light	Indicates Low Battery Warning and a warning tone (<i>if sound is activated</i>) will sound. Staff must bring these indications to the notice of management so they can organize replacement batteries for the locks.
	Battery life status check and battery change procedures can be found in this guide as well as in the Reference Manual.

For more information please see the Reference Manual

Programming ACS Instructions

The following steps need to be completed before the Access Control can be programmed and initialised.

Refreshing Programmer Data



Induction Area: This area should be directed toward the door lock induction area, ensuring the communication between devices is successful.

1

Connect the mobile programmer to the desktop computer encoder using the black headset jack.



Select **DOWNLOAD DOOR DATA** from the software ribbon.



Select **DOWNLOAD DOOR DATA** in new window (*'Download data success' notice appears on completion*).



Select **OK**.



Disconnect the mobile programmer, close the software and re-open (*allowing the software to communicate with the encoder correctly*).

Issue ACR's Control Card

The ACR time period function allows operators to nominate 2 time periods for access or free passage.

- During the allocated period anybody can gain access (*Free Passage*) or access requires a valid Staff Card/Guest Card.
- Movement outside of the allocated time period can be restricted to only staff or staff and guests holding valid cards only.



Select **System Menu > System Setting > Issue ACR's Control Card**.



The ACR Control Card must match the associated public door and the related guest room to function correctly.

Set the time period

Enter the relevant time period required for control card movement.

(Use PT1 only if a single time period is required and PT2 if additional access restrictions are in place).

Select the time period

Enable PT1 and / or PT2 to allocate time frames to the card.

Within Time Periods

1. Free Passage: Allows access to anybody.
2. Staff card / Guest Card: Valid cards required to gain access.

Outside Time Periods

1. Staff Card: Only Staff (*Not Guests*) can gain access
2. Staff Card / Guest Card: All valid cards can gain access.



Select **Issue ACR card**.

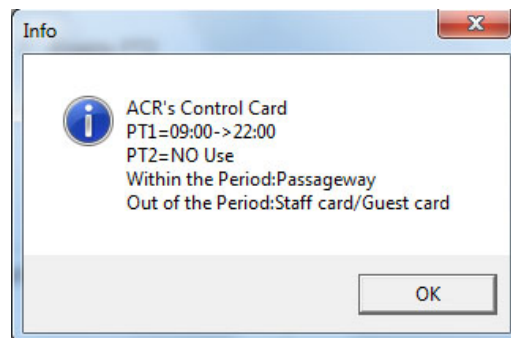
Place card on Encoder. (*Two blue lights appear and 'Issue Card Successfully' window appears*).



The card can now be used in the allocated time periods.



Selecting “read card” displays the allocated time periods of card - (*see example below*).



Match the associated public door and the related guest rooms in Public Door System Management (set public door associates.)

Connect the mobile programmer using the USB cable and select 'download door data' (*refer to programmer screen for confirmation of download*).

Lock User Guide


Operator now proceeds with mobile programmer to load data on associated public door number/s and relevant guest rooms.



This card will now need to be presented to the induction area of the ACR/s which require this access setup.

1 x card can be used on several ACRs if the same settings are required for each ACR.

Programming Access Control Module

- 1 Press **FUNC** (x 3). Screen will display: **DOWNLOAD**
LOCK DATA?
- 2 Press **RUN**.
- 3 Enter room number associated to the access point from software reference.
-  Refer to KAS programming reference numbers for your specific number sequence
- 4 Press **RUN**. Screen will display **Downloading**
Counting 1~6
- 5 Direct the programmer to the induction area. Beeps will sound every time the number changes on the programmer.

Screen will display: **TURN THE KNOB ON BACK PLATE**

- 6
 - This is only required for the first initial programming – You will need to press the program button located on the PCB board for one (1) second.
 - For changes or to updated ACR – Do nothing and wait 5-6 seconds.



This will change the light on the PCB from alternating red/blue to a constant green.

7

Set Time and Date: Press **FUNC** x 1 (*Time and Date will appear*)
Press **RUN** and hold programmer in front of the ACR

8

Issue ACR Card from software * See [Issue ACR's Control Card](#).
Swipe card over the lock. Several beeps will be heard if accepted.



ACR Indication

If successful, screen will display: **Download complete.**

From the ACR (*reader*): Blue light dims and several beeps are heard to confirm programming successful.

From the ACM (*Modula*): Light will shine green then return to flashing red.

If unsuccessful: Red flashing light will turn red and harsh noise will sound – Please try again or see trouble shooting notes below.



If you wish to control access times for guests/staff and/or patron use please see Issue ACR's Control Card

Lock User Guide
CHEAT SHEET

BEFORE YOU BEGIN

IT IS RECCOMENDED THAT YOU READ THE FULL BOOKLET BEFORE YOU BEGIN PROGRAMMING.



ENSURE YOU HAVE YOUR PROGRAMMING REFERENCE SHEET WITH YOU AND A VALID ACCESS CARD

ENSURE YOU HAVE DOWNLOADED THE DATA FROM THE SOFTWARE

FOR FULL INSTRUCTIONS/TROUBLESHOOTING PLEASE REVIEW THIS BOOKLET

Programming Hardware

1	Press number 3 - Screen will display: Download Lock Data?
2	Press RUN .
3	Enter room number associated with door * see programming reference sheet. Press RUN
4	Direct the programmer to lock face. <i>Beeps will sound every time the number changes on the programmer</i>
5	<p><i>Several fast beeps will sound to confirm programming</i></p> <p>For Battery Operated Door Lock: Turn Privacy Snib (<i>located above the handle on back handle</i>), 90 degree and back again</p> <p>-----</p> <p>For Access Control System: Press programming button located in Access Control Module</p> <p>If successful: DOWNLOAD COMPLETE</p>
6	Press number 1 <i>Time and Date will appear</i>
7	Press RUN and hold to lock face If success full: DOWNLOAD COMPLETE
8	While door is open: Test Card/or FOB on Lock in case there is any problem <i>*Card must be tested to run the motor and lock the door</i>

FOR FULL INSTRUCTIONS/TROUBLESHOOTING PLEASE REVIEW THE QRG PROGRAMMING BOOKLET